



NEWSLETTER: TERM 1 - WEEK 3

11th February 2020

State Highway 12, RD3, Kaikohe, 0473

Phone: 09 4053901

admin@waima.school.nz | principal@waima.school.nz

www.waima.school.nz

Tena koutou nga matua nga whaea me nga whanau katoa,

We're pleased to welcome Rainbow Hapeta-Neho to our kura! We are also delighted to welcome a new staff member - Gina Williams. Gina is from Whangarei and will be teaching year 3-5 students. Mrs Davidson will come in each Friday to release staff. We are very sad to say farewell to Whaea Merepaea this term. Merepaea now has a full time job with Footprints in the Hokianga.

UP & COMING EVENTS	
Thursday, 27th February	Waima School - Swimming Sports/Pool Party
Thursday, 5th March	Hokianga Interschool Swimming Sports - Opononi (9-12 year olds)
Friday, 13th March	Action World (Paihia)
Thursday, 19th March	Ki O Rahi Year 5,6 Kaikohe
Friday, 20th March	Ki O Rahi Year 7,8 Kaikohe
Tuesday, 31st March @10am	Athletics at Rawene School (Yr 0 - Yr 4)
Wednesday, 1st April	Taki Rua production at Waima school & Umawera School Visit
Thursday, 2nd April @10am	Athletics at Rawene School (Yr 5 - Yr 8)
Thursday, 9th April	Last day of Term 1

TRL RUGBY LEAGUE NOTICE

Date: Wednesday, 19th February 2020 | Start Time: 6pm | Location: Lindvart Park

Any parents & children interested in joining the TRL Rugby League module for children ages from;

- Under 5's – 5 a side, 5 minutes each way
- Under 7's – 7 a side, 7 minutes each way
- Under 9's – 9 a side, 9 minutes each way
- Under 11's – 11 a side, 11 minutes each way
- Under 13's – 13 a side, 13-15 minutes each way

MOUTHGUARDS COMPULSORY FOR ALL PLAYERS. BOOTS COMPULSORY FOR UNDER 13's.

TEAM'S WILL BE MADE UP ON THE DAY

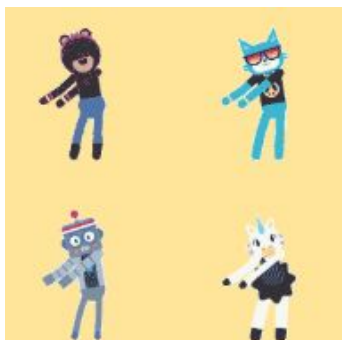
Please contact Dave Reihana on 4052396 if you have any queries or concerns

Any parents willing to referee would be appreciated

COME ONE, COME ALL!

Puawai:

Welcome to week 3. This week we have begun coding (programming). We are learning about unplugged and plugged programming. We are at the beginning stages therefore we have had a few glitches in our algorithms. The students are enjoying creating their 'Dance Through Code'.



We are also using a new platform for our independent learning 'Education Perfect', the students have been delving into a range of languages and curriculum areas.

Getting 'CHASED' By Horses

Unfortunately, this doesn't happen often but right now at this moment I'm about to tell you one of my **FUNNIEST** memories I can remember.

Noknok, !^%**? and I were walking back from the Taheke Falls because we had just finished a little doggy-paddle in the refreshing creek water. As we were walking back to Noknok's house we heard a roaring sound coming around from the corner so we looked back to see who was coming, it was Dongdong. As we looked back we could see the horses' hair flying in the wind and if you had very powerful ears you could hear the galloping of the horses running supersonically around the corner. As soon as they just nipped the corner our **D*%^<*S** decided to start running, and because I hesitated too much around fast animals I had a genius idea and quickly ran up the dirty rough hill and jumped the fence. Noknok had trouble getting up and !^%**? was trying very hard to climb up. But as the fast beasts came closer, they stopped very harshly, turned around and then galloped very fast back down the rocky hill.

I then knew it was clear to jump back over the fence, tumble down the muddy hill and then walk home safely with no problem. But then there was this one tincy-weeny problem, we had to try to get one horse back over. So I ran next to Noknok and never left her side until that **HORSE!** was back to the side it belonged to. It finally came through the gate so I rushed past Noknok and !^%**? and quickly ran on the safe side, we then closed the gate and strolled home **SAFELY!!**.

Marama

FUNDRAISING/LUNCH ORDERS

*The following items will be made available to students for purchase this Friday, orders to be placed at the office

Popcorn \$3	Sausage Sizzle \$2	Noodles \$2	Pie \$3	Drink \$2	Ice-Block \$1	Ice-cream \$2
----------------	-----------------------	----------------	------------	--------------	------------------	------------------

Special Education:

“Does your child have difficulty speaking, hearing or learning?”

Managing their behaviour, getting on with others?

Problems seeing properly and or other unmet needs and differences that set them apart from others?

Any of these concerns can all affect a child's progress at school/kura. Te Manawa Tahī is a learning support hub where you can come in and talk to education professionals about your child's learning needs. This is a free service.

Look for the Te Manawa Tahī flag which will fly outside each Te Manawa Tahī site (refer to image on the right).

Our timetable with dates and times is posted on our Facebook page. You can come into the hub without an appointment or you can call to make one: 0800 5248 4256.

Your school/kura/early childhood service can also make an appointment for you. Or you can email us:

TT.Support@education.govt.nz.”



2020 BOT MEETING DATES

TERM 1	TERM 2	TERM 3	TERM 4
11th February & 17th March	12th May & 16th June	4th August & 8th September	27th October & 1st December

Available at the School Office: Community member guide to the role of the board of trustees. This explains a lot of commonly asked questions and information about becoming a trustee, please get in touch if you'd like a copy.

Youthline
Need to talk?
Contact us, we are here to help!
Free call 0800 376 633
Free txt 234
Email talk@youthline.co.nz

FREE PARENTING HELPLINE
all issues - all ages
0800 568 856
parenthelp.org.nz

Remember to use our website to keep updated about school information - www.waima.school.nz

Jenny Colebrook
Principal

